



279 1111 Lincoln Road

2010, Miami Beach -
Herzog & de Meuron

This project consists of a building attached to an existing building with a mixed-use programme: car park, retail, and private residence. This large car park is a public facility whose aim is to favour the exchange of transport from private to shared. People switch from one mode of transport to another: from car to bus or train. This transport substitution relieves traffic congestion in the city and improves air quality.

Source: <https://www.herzogdemeuron.com/projects/279-1111-lincoln-road/>



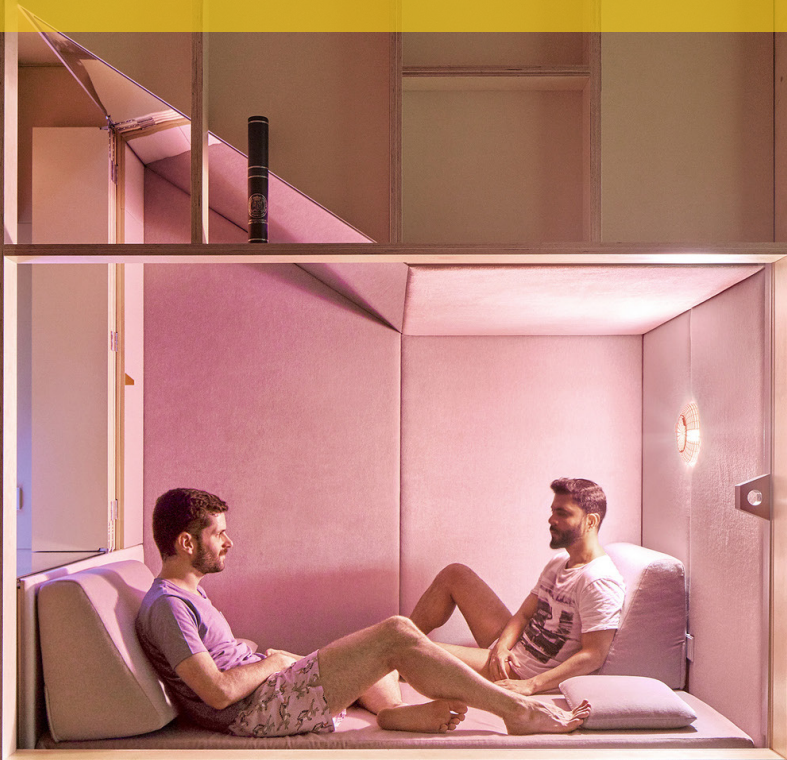
Encourage the use of shared public transport

Developing car parks on the outskirts of the city and connecting them to public transport networks and cycle paths would reduce traffic congestion and air pollution, improve public health and enhance the overall quality of life of the city's inhabitants.

- Strengthen the public transport system.
- Encourage car replacement by public transport.
- Locate car parks on the outskirts of the city, with connections to public transport and cycle paths.
- Make a targeted study of the intensity of use of these car parks. For example, their use in the tourist season, as a service for workers commuting to the city for work, etc.



UR
2



A Guy, his bulldog, a vegetable garden, and the home they share

2018, Madrid - Husos Architects

The renovation of this Madrid flat prioritized the comfort of its canine resident, a heat-sensitive bulldog. To ensure optimal ventilation, the space was redesigned for cross-ventilation. A vertical garden was added to regulate temperature, providing insulation in winter and cooling in summer. Dog-specific furniture, such as floor cushions, was incorporated. Beyond practical considerations, the renovation showcases a didactic approach, where materials and colors visually explain the underlying mechanisms. This project also demonstrates how a small space can be multifunctional and adaptable.

Source: <https://husos.info/Un-chico-un-bulldog-un-huerto>



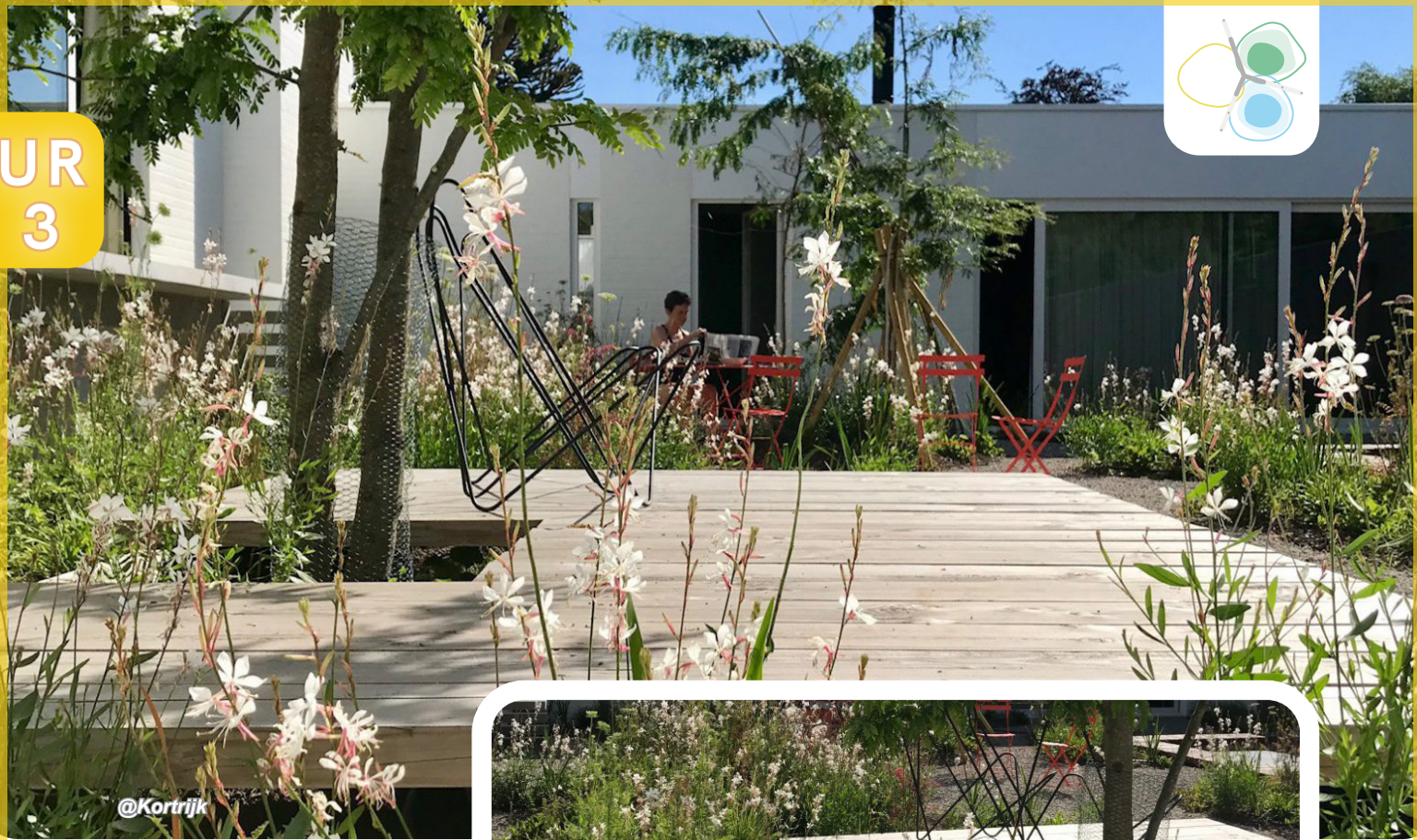
Design for all with a vision of a sustainable and inclusive approach

To create a more sustainable and humane living space, consider the needs of all inhabitants, including non-human ones. Prioritize functionality and aesthetics to create spaces that are both practical and beautiful.

- Prioritise the needs of non-human users when renovating a space.
- Consider the local climate when designing a house.
- Use plants to regulate the temperature of the house.
- Create functional, flexible and aesthetically pleasing spaces.



UR
3



An en Thomas

2019, Kortrijk - Studio
Basta

The enclosed garden of this house has a multitude of native species. Its platforms run the entire length of the courtyard and are anchored in the terrain. The result is a very pleasant space where you can contemplate the vegetation from a different point of view to that provided by a traditional path. In this particular case, the platform brings you closer to the top of the tree and lifts you above the substrate, allowing you to contemplate the bushes and flowers from another point of view.

Source: <https://www.studiobasta.be/projecten/priv%C3%A9tuinen/an-en-thomas>



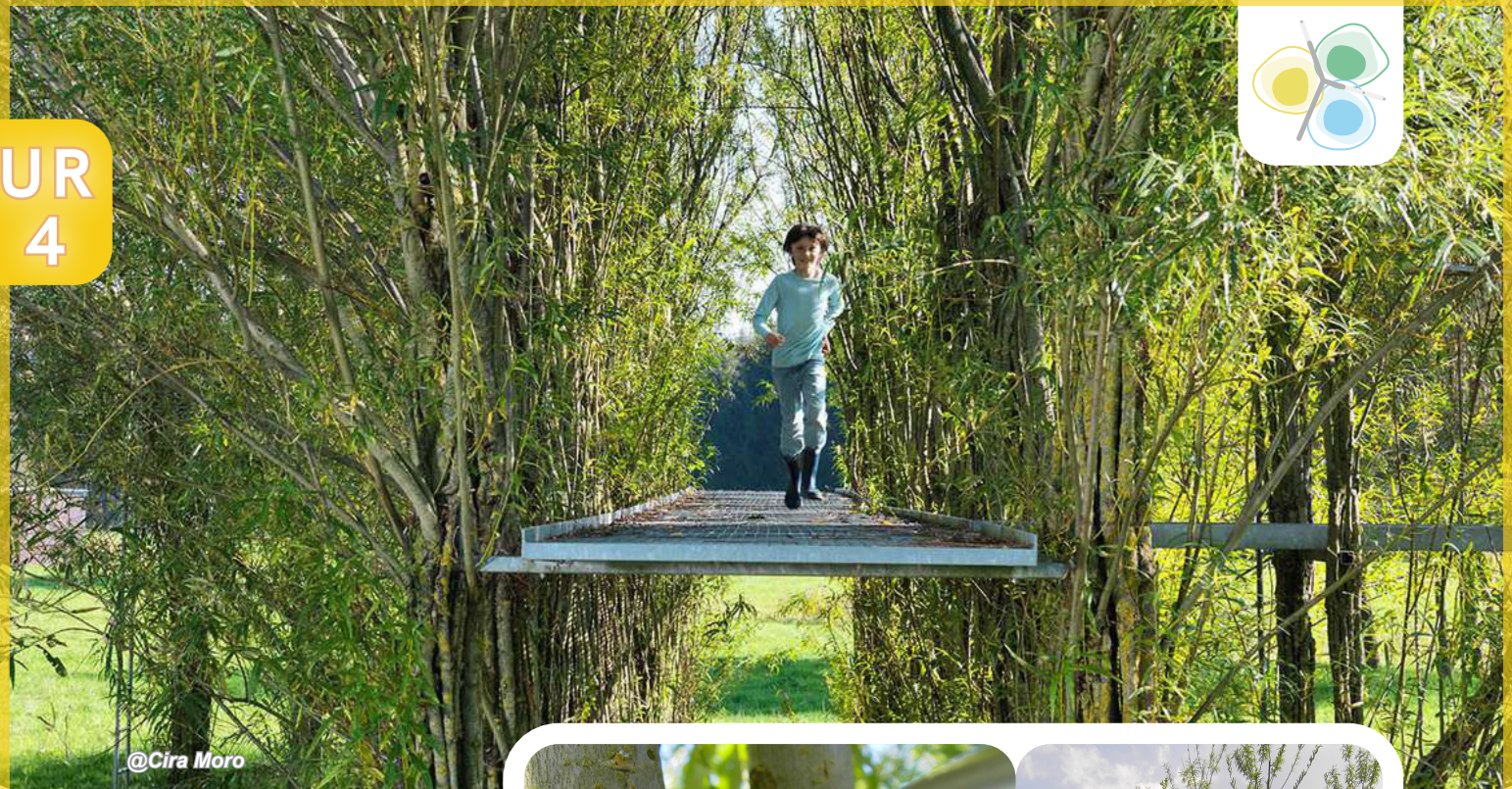
Create decks over vegetation cover

Use native plants, create different levels and viewpoints, and build walkways over vegetation to enhance your garden's beauty and sustainability.

- Use native plants in your garden.
- Arrange different levels of walkways in your garden, such as platforms or terraces.
- Provide different viewpoints to view your garden, e.g. from above or below.
- Create walkways over vegetation cover, thus favouring drainage.



UR
4



@Cira Moro

Baubotanik Footbridge

2005, Stuttgart - Ludwig,
Storz, Hackenbracht

In this exercise that translates theory into practice, an elevated platform is designed where the walkway is made of metal but the pillars and structure are made of plants. A flexible, fast-growing plant with no specific substrate requirements was selected. This structure of 64 vertical and 16 diagonal bundle columns that were composed of 12 to 15 plants each has been transformed over the years. For example, the handrail has been enveloped by the plant structure. Some plants have also died. But this, far from being a mistake, is just another phase of the project: maintenance. This project is not just about incorporating vegetation as building elements, but about the interaction between user and environment through maintenance and the comprehension that nothing stays the same over time.



@Cira Moro



@Cira Moro

Create dynamic and resilient spaces that evolve over time

To create innovative and sustainable designs that integrate nature and human experience, consider living structures and embrace the ongoing maintenance.

- Use plants as structural elements in your designs.
- Choose plants that are fast-growing and adaptable.
- Embrace the natural process of growth and decay.
- Incorporate maintenance into your design process.
- Consider the user's interaction with the environment.

Source: <https://www.arc.ed.tum.de/en/gtla/research/experimental-buildings/baubotanik-footbridge/>



@ Rachel Warne

BBC Springwatch Garden

2019, RHS Hampton Court Palace Garden Festival - Jo Thompson Landscape Garden Design

The project is a great example of how in tightly confined areas there can be an explosion of diversity. With small changes such as plant selection, cultivation and care as well as the implementation of a wildflower meadow, a pond, a log pile, and a bird feeder the environments can become true havens for wildlife.

Source: <https://www.jothompson-garden-design.co.uk/portfolio/bbc-springwatch-garden-rhs-hampton-court-flower-show-2019/>



@Rachel Warne



@Rachel Warne

Create a wildlife-friendly garden

To create a garden that restores wildlife, incorporate small changes such as planting native flowers, adding small water features and providing shelter for animals. You can also designate specific areas for biodiversity to bloom freely.

- Make small changes to your garden to create a haven for wildlife.
- Plant native wildflowers and grasses.
- Create a pond or other water feature.
- Provide shelter for wildlife, such as log piles or bird boxes.
- Use ecological gardening practices.
- Make biodiversity islands, experimental gardens or flora reserves



UR
6

@Green&Blue

Bee Brick

Cotswolds, UK -
Green&Blue

Pollinators play an important role in the ecosystem and also in our gardens and parks. That is why it is important to help maintain bee populations by creating shelters and habitats. In the balance of the ecosystem we can find other living beings that need shelter, such as bats or birds, which regulate the presence of some bugs. There are some solutions that are incorporated into the construction of buildings that provide shelter for these living beings: habitats for bats, birds, solitary non-heating bees, red mason bees and leafcutter bees, among others.

Source: <https://www.greenandblue.co.uk/>



@Green&Blue



@Green&Blue

Creation of wildlife shelters

Wildlife shelters provide shelter for these important pollinators. They can be prefabricated, but you can also combine materials such as wood, stone or brick and leave gaps between them.

- Create habitats for pollinators, such as bees and butterflies.
- Provide shelter for birds and bats, which help to control pests.
- Incorporate insect shelters into the construction of buildings.
- Build insect shelters using materials like wood, stone, or brick.



UR
7



@Perkins+Will

Bench Accounting 2017, Vancouver - Office Interiors Perkins+Will

This office project prioritizes employee well-being by offering a flexible work environment that encourages both remote and in-office work. The design incorporates warm, domestic elements like carpets and fireplaces, along with natural features. A variety of 24 different workspaces, including individual workstations, meeting rooms, and collaborative spaces, cater to diverse work styles and preferences. This approach has led to increased employee satisfaction, spontaneous collaboration, and motivation.

Source: <https://perkinswill.com/project/bench-accounting-office-interiors/>



@Perkins+Will



@Perkins+Will

Create a more engaging, productive and enjoyable work environment

To create a workplace that is both productive and enjoyable for employees, consider these design recommendations.

- Prioritize employee well-being and offer flexible work options.
- Design spaces that foster collaboration and creativity.
- Incorporate natural elements into the office environment.
- Provide a variety of workspaces to accommodate different needs.
- Encourage spontaneous interactions and social connections.



@European Union

Borgo Sostenibile Figino

2015, Milan - RSG
Architects - Engineers,
Alessia Sarno, Enrico
Gianni, Renato Sarno

This social and collaborative housing complex is a pioneer in the social housing sector due to its innovative approach and the principles it embodies. It offers a diverse range of housing options, fostering a community with varied socioeconomic backgrounds. The complex also features well-designed public spaces that promote social interaction. Additionally, the homes are energy-efficient, contributing to environmental sustainability. This project demonstrates how social housing can create more equitable, inclusive, and sustainable communities.

Source: <https://borgosostenibile.it/>



@Alessia Sarno



@European Union

Build accesible and resilient communities

The goal of social housing lies in creating inclusive, sustainable, and community-oriented living spaces. By combining affordable housing options, designing public spaces, and prioritizing energy efficiency, we can build accesible and more resilient communities.

- Combine affordable rent, rent-to-own, and rent-controlled options to create diverse communities with different socioeconomic backgrounds.
- Design public spaces like paths, plazas, green areas, shared spaces, and areas with shops and services to encourage interaction and a sense of community.
- Prioritize energy-efficient buildings to reduce environmental impact and resident costs.

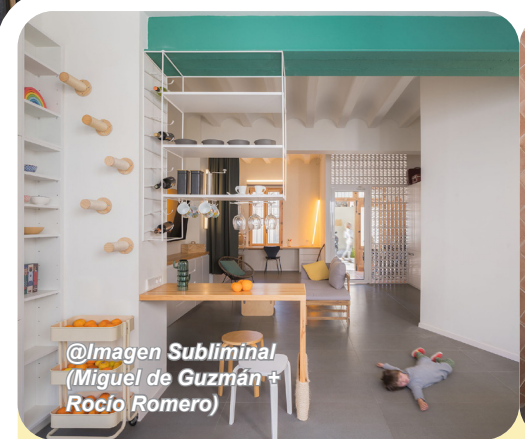


@Imagen Subliminal
(Miguel de Guzmán +
Rocío Romero)

Casavera 2024, Valencia - Gon Architects

The casavera home renovation project has been designed to be accessible and comfortable for the whole family, one of whom is a wheelchair user as well as a cat. The techniques used to make the house accessible range from the more traditional (floor leveling, widening doorways, ramps), to less conventional solutions such as an accessible pool and wheelchair accessible furniture. The house also stands out for being a rehabilitation that uses traditional architecture to make a more beautiful and ecological house: the courtyard provides ventilation, regulates the temperature and offers daylight.

Source: <https://gon-architects.com/en/proyectos/casavera/>



@Imagen Subliminal
(Miguel de Guzmán +
Rocío Romero)

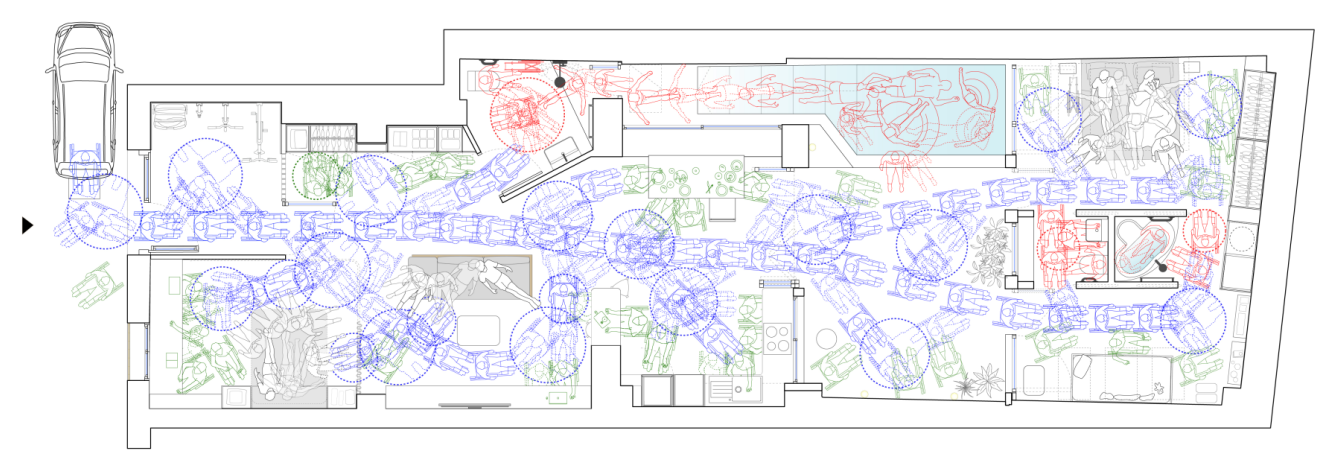
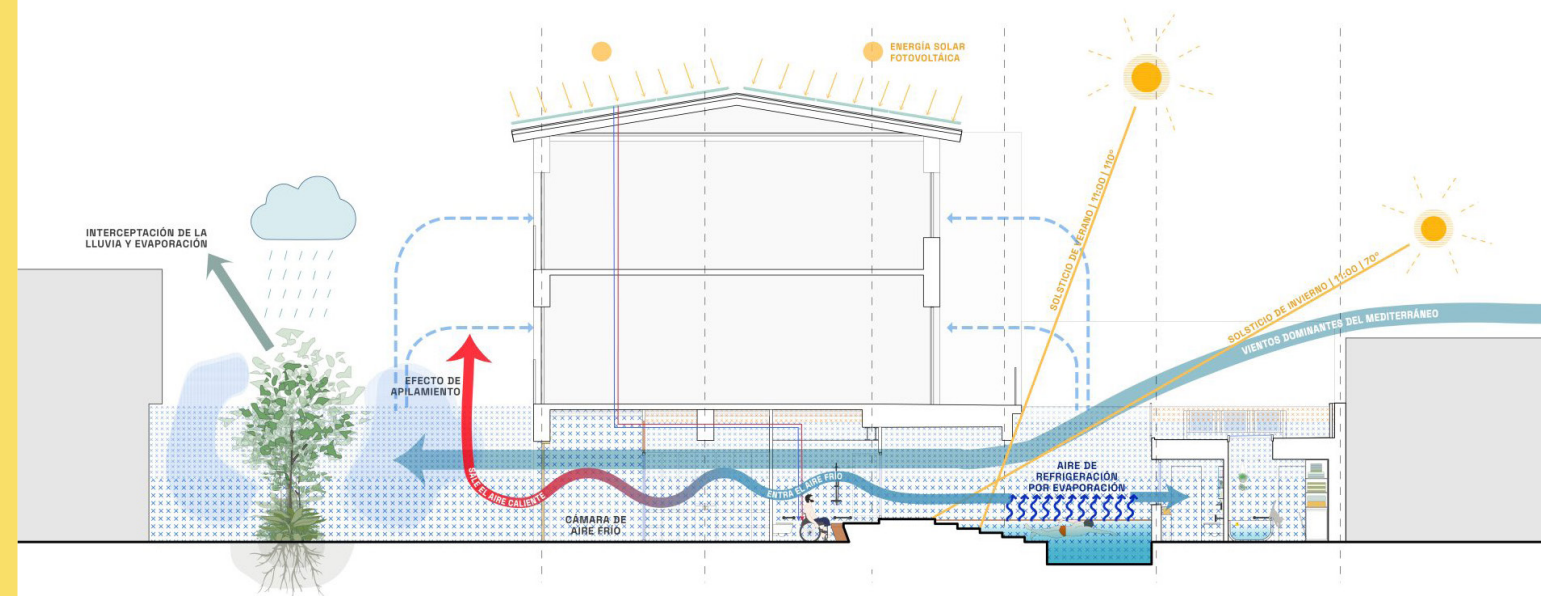


@Imagen Subliminal
(Miguel de Guzmán +
Rocío Romero)

Ensure that the design meets the needs of all users

By adopting a universal design approach, we provide autonomy to users. Designs that do not need particular adaptation are more beautiful and inclusive.

- Consider the needs of people with disabilities, people with mobility impairments, and people with other needs.
- Use a variety of accessible design techniques. This can include both traditional and innovative solutions.
- Prioritize natural light and ventilation to create a more comfortable and healthy living environment.
- Consider the needs of pets as it help to create a more inclusive home for all community members.



@Imagen Subliminal (Miguel
de Guzmán + Rocío Romero)



@Carlo Baroni,
Roberta Pizzi

Centro Comunitario en Poggio Pienze

2015, Poggio Pienze -
Burnazzi Feltrin Architetti

This community building is linked to the landscape and the memory of the place. It has a wood-clad structure wrapped in a series of tensioned cables that support the growth of lianoids or climbing plants. This increases the structural complexity of the vegetable strata, gives shelter to animals and provides cool and pleasant shadows. In addition, the project integrates the participation of the users, who are in charge of the maintenance of the plants.

Source: <https://burnazzi-feltrin.it/opere/centro-di-aggregazione-giovani-ed-anziani/>



@Carlo Baroni,
Roberta Pizzi

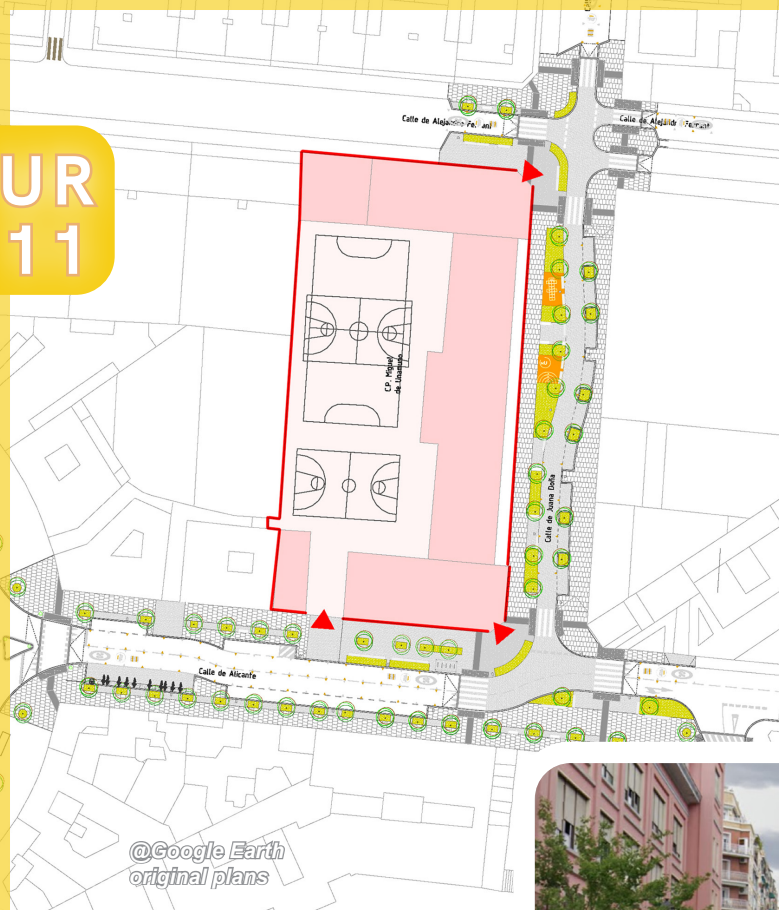


@Carlo Baroni,
Roberta Pizzi

Use tensioned cables to support the growth of climbing plants

By using tensioned cables to support climbing plants, we can create a more complex and diverse plant structure. This will provide shade and shelter for animals, improving the overall biodiversity of the area.

- Provide shelter for animals and cool shade by increasing the complexity of the vegetation strata.
- Increase the structural complexity of plant strata by growing climbing plants.
- Use tensioned cables to support the growth of lianoids or climbing plants.



Colegio Miguel de Unamuno Ampliación de aceras en la Calle de Juana Doña

2022, Madrid - Paloma
García Romero, Area of
Works and Equipment,
Madrid City Council

School environments must be safe spaces for pedestrians, since children, families, teachers and workers congregate there at certain times of the day. It is important that the spaces are also healthy, with spaces for play and natural environments. Prioritizing pedestrians over vehicles is fundamental. It is also necessary to facilitate access to people arriving in an adapted vehicle or by public transport as opposed to private vehicles.

Source: https://afaunamuno.org/wp-content/uploads/2023/02/Criterios-Intervencion-EE-30Mar_22.pdf



Protect the immediate environment of educational centers

Continuous routes for a school ensure the sustainable, safe and autonomous mobility of school children, whether on foot, by bicycle or scooter, from their homes to the schools.

- Outside the educational center and in the surrounding area, vehicle traffic speed should be kept to a minimum.
- Traffic calming in the school environment, reducing lanes and traffic speed.
- Improving access to schools.
- Expansion of the areas of stay and the green, incorporating new urban furniture: benches, planters
- Creation of spontaneous play areas.
- Installation of safety elements.



@José Hevia

Educán School for Dogs, Humans and Other Species

2017, Brunete -

Eeestudio + Lys Villalba

The Educán project exemplifies innovative multi-species architecture by prioritizing the needs of humans, animals, and the surrounding ecosystem in a symbiotic design. Situated in a rural area impacted by urbanization and intensive agriculture, it fosters ecological balance through features like bird nesting facades, rainwater harvesting, and habitats for pollinators and pest-controlling species. The design integrates sustainable materials and hybrid construction techniques, reusing shipping containers alongside CNC-cut timber and handcrafted ironwork. Functional adaptations, such as dog-friendly flooring, sound-absorbing materials, and bioclimatic elements, ensure comfort and usability for both human and non-human occupants. By reimagining agricultural architecture as a site for innovation, the project highlights the potential of ecologically integrated designs to recover ecosystems and redefine spatial typologies.

Source: <https://lysvillalba.net/School-for-dogs-humans-other-species-Educán>



@ José Hevia



@José Hevia

Integrate non-human ecosystems into architecture

To create truly inclusive and sustainable designs, it is essential to embrace non-human ecosystems as integral to the architectural process, ensuring that structures support biodiversity, foster symbiotic relationships, and enhance ecological balance.

- Accommodate the needs of various species in spatial and functional planning.
- Emphasize reuse, recycling, and waste reduction in construction.
- Include features that support ecosystems, like habitats and water harvesting.
- Design spaces with species-specific needs, such as flooring and acoustics.
- Use flexible and modular systems for evolving functionality.
- Leverage passive climate control to enhance energy efficiency.
- Reimagine rural typologies as opportunities for architectural and ecological advancements.



UR
13



Expansion of Roche Diagnostics headquarters in Sant Cugat del Vallès

2021, Sant Cugat del Vallès, MA Barcelona - Batlleiroig Arquitectura

Roche's new headquarters seeks a space of the highest quality, committed to technology and resilient to the consequences of the climate crisis. Its exteriors are organised by understanding the environment: near a torrent, a garden has been designed to resist currents and to enhance water requirements. Near the building, more ornamental plants are found that are attractive and serve as an architectural programme: climbing plants that provide fragrance and shade, or very colourful flowers to enjoy. The aim is to create a eco-region-conscious garden.

Source: <https://www.batlleiroig.com/es/proyectos/ampliacion-de-la-sede-de-roche-diagnostics/>



Design your garden adapted to the eco-region

Creating a landscape that is integrated with the environment and resilient to climate can also provide a solution to several technical project objectives.

- Prioritize sustainability and resilience in gardening design.
- Use plants that are native to the region and that can withstand local climate conditions.
- Consider the aesthetic value of plants when selecting species.
- Use plants to create a sense of place and connection to the surrounding environment.
- Study the conditions and shape of the environment to design the garden.
- Increase the use of climbers or lianoids to increase the structural complexity of the vegetation layer. They provide shelter for animals, and provide cool and pleasant shade.



@Marcelo Roux

Friendship Park

2015, Montevideo -
Marcelo Roux + Gastón
Cuña

The Parque de la Amistad in Montevideo offers an innovative approach to inclusive public spaces. It allows children and young people, regardless of their physical or cognitive abilities, to engage in play and social interaction. The park integrates the landscape with existing structures like the planetarium and observatory, avoiding restrictive designs. Divided into six sections, each caters to different activities, including sensory exploration and digital development. By using materials like concrete, metal, and rubber, the park creates an environment rich in tactile, auditory, and aromatic experiences, demonstrating that inclusive spaces can be both functional and emotionally enriching..

Source: https://www.archdaily.mx/mx/769253/parque-de-la-amistad-marcelo-roux?ad_medium=gallery



@Marcelo Roux



@Marcelo Roux

Design Diverse Playgrounds

Inclusive playgrounds are designed to cater to all abilities, promoting play, learning, and social interaction. Focusing on accessibility, sensory stimulation, and varied play zones, these spaces ensure safety, comfort, and creativity for every child.

- Design all areas to be accessible for children of all abilities.
- Integrate tactile, auditory, and aromatic elements to engage different sensory experiences.
- Develop distinct areas catering to different age groups and developmental needs.
- Avoid harsh edges and create inviting, curved pathways.
- Blend nature with play areas to enhance the sensory and aesthetic environment.
- Choose safe, durable materials for long-lasting, comfortable play.

Universal Design

Hearing impairment

Visual impairment

Cognitive abilities

Physical abilities and features

Temporary

Gender perspective

Carers

Older people

Children

Low-education

Low-income

Decolonial perspective

Digital barrier

Environment

Other(+)



UR
15



Mamífera

2023, Barcelona - Equal Saree

The Mamífera installation challenges the stigma and isolation often associated with public lactation by providing a safe, comfortable, and visible space for individuals feeding infants. It promotes collective care, mutual support, and visibility, and it is equipped with practical amenities—such as a changing station, refrigerator, and lactation cushions. It supports diverse feeding methods, from breastfeeding to bottle feeding, while fostering social interaction. Mamífera highlights the urgent need for caregiving-friendly public infrastructure in cities.

Source: <https://equalsaree.org/es/project/mamifera/>

Make public spaces for shared care

To create inclusive urban spaces that support caregiving, it is essential to prioritize accessible, visible, and communal environments that meets the needs of individuals during their care-givers process

- Design public infrastructure that supports caregiving, prioritizing accessibility and reducing stigma around activities like lactation.
- Use spatial layouts, such as circular seating, to encourage shared experiences, mutual support, and collective caregiving.
- Equip spaces with essential amenities, such as changing stations, water access, and comfortable seating, to accommodate diverse feeding practices and caregiving needs.
- Incorporate design elements like signage and open, permeable structures to promote acceptance and visibility of caregiving activities in public.
- Use eco-friendly, durable materials and collaborate with local, socially-responsible enterprises to ensure environmental and community benefits.
- Align architectural initiatives with broader legal and cultural efforts, such as laws recognizing the right to lactation in public spaces, to safeguard against discrimination.
- Incorporate adaptable features like cushions, play areas, and shading to support diverse user needs, from infants to caregivers, enhancing comfort and usability.

Universal Design

Hearing impairment

Visual impairment

Cognitive abilities

Physical abilities and features

Temporary

Gender perspective

Carers

Older people

Children

Low-education

Low-income

Decolonial perspective

Digital barrier

Environment

Other(+)



UR
16



@David Frutos

Maternity Area in HM Nuevo Belén Hospital

2013, Madrid - VIRAI +
Parra-Müller

Marta Parra and Ángela Müller's work in humanizing delivery rooms in Spain represents a profound shift in how healthcare spaces are designed and their impact on individuals' birthing experiences. Their approach moves away from traditional sterile environments, creating welcoming spaces that prioritize comfort, autonomy, and privacy. These rooms feature natural lighting, obstetric bathtubs, ergonomic furniture, and options for companions, aiming to offer a more human-centered birth experience. This vision aligns with the principles of accessibility and inclusive design, as it considers both the physical and emotional needs of individuals, promoting well-being and active participation in childbirth.

Source: <https://www.virai.eu/utpr-en-clinica-belen/>



@David Frutos



@David Frutos

Birthing Spaces for All

Focus on creating inclusive, comfortable, and supportive birthing environments that prioritize autonomy, privacy, and well-being for all individuals.

- Create delivery rooms that prioritize comfort and autonomy, with features such as natural light, ergonomic furniture, and privacy.
- Include options like obstetric bathtubs, showers, and places for rest, to cater to the diverse needs of individuals during childbirth.
- Design spaces that allow individuals to control their environment, offering privacy when needed, and including areas where one can retreat for moments of calm.
- Use clear, internationally recognized typefaces and pictograms to accommodate diverse users.
- Allow for spaces that comfortably accommodate companions or family members, reinforcing emotional support during the birthing process.
- Choose materials and colors that promote relaxation, calm, and a feeling of being in a safe, supportive environment.
- Move away from the medicalized view of birth by creating spaces that emphasize health and well-being rather than treating individuals like only patients.



@Antonio Navarro
Wijkmark

Meridiana Avenue Barcelona

2019, Barcelona -
Batlleiroig Arquitectura

Transforming a major road is a complex task when you have to deal with pre-existing conditions that can often be very limiting. This is the case of this avenue in Barcelona, where there were trees (which were intended to be preserved) and an underground railway structure, which prevented major transformations. Through a micro-topographic intervention, the new public and pedestrian path has been consolidated and re-naturalized. The biodiversity of this space includes flowering periods in all seasons of the year. Throughout the route, there are three types of vegetation: herbaceous, shrub, and tree (both pre-existing and newly planted). Incorporating diverse plants that bloom year-round promotes biodiversity and supports pollinators, crucial for a healthy ecosystem. Considering different vegetation layers creates a complex, visually appealing space that attracts both people and wildlife.

Source: <https://www.batlleiroig.com/es/proyectos/el-nou-passeig-de-la-meridiana/>



@Antonio Navarro
Wijkmark



@Antonio Navarro
Wijkmark

Renaturalize public space

Renaturalizing public spaces can improve air quality, reduce noise pollution, and provide habitat for wildlife.

- Preserve existing trees and vegetation whenever possible.
- Incorporate a variety of plants that bloom throughout the year to promote biodiversity and food for pollinators.
- Consider the different layers of vegetation (herbaceous, shrub, and tree) when designing the space.



@Kenta Hasegawa

Narita International Airport Terminal 3

2015, Narita - Nikken Sekkei + Ryohin Keikaku + PARTY

Narita Terminal 3 reinvents wayfinding by prioritizing cost-effective innovation and user-centric navigation. Designed for a low-cost carrier terminal with significant budget constraints, the terminal forgoes expensive backlit signage in favor of tarpaulin banners, seamlessly integrated into the design for affordability and aesthetic cohesion. The pathway design, inspired by a running track, uses blue for departures and red for arrivals, enhancing both orientation and emotional connection. Pictograms and signage employ universal design principles, with enhanced visibility through contrasting colors and strategic placement on walls and pathways. By focusing on intuitive cues and accessible materials, the terminal demonstrates how creative solutions can deliver efficient, clear, and enjoyable navigation even in high-traffic environments.

Source: <https://prty.jp/projects-detail/terminal-3>



@Kenta Hasegawa



@Kenta Hasegawa

Intuitive navigation

Effective wayfinding is at the heart of user-friendly design, blending functionality, accessibility and creativity to guide travelers with ease and clarity.

- Implement distinct color-coded pathways to intuitively guide travelers and evoke emotional responses.
- Replace traditional signage with affordable alternatives like banners that align with the overall design.
- Position wayfinding elements, such as pictograms and signs, where they are most visible and impactful.
- Use clear, internationally recognized typefaces and pictograms to accommodate diverse users.
- Blend navigational cues with architectural and spatial elements for seamless functionality.
- Use design to create positive psychological impacts, such as excitement or relief, through colors and symbols.
- Ensure wayfinding elements are easy to understand, reducing cognitive load for travelers in busy settings.



@Milena Villalba

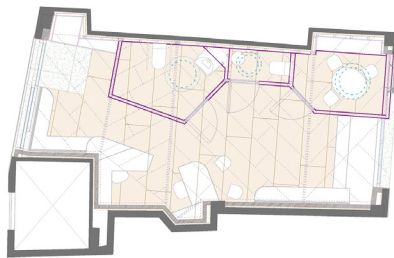
ONDIS, Oficina de No Discriminación y contra los Delitos de Odio

2020, Valencia - 7a+i

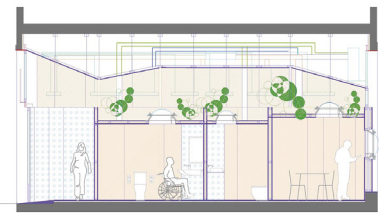
The renovation of this municipal space prioritizes both privacy and transparency, creating an environment that is accessible and welcoming while safeguarding the confidentiality of its users.

The design features a transparent façade, allowing information to be visible from the outside, while the central area is protected by partitions that offer privacy for confidential support. This balance between openness and discretion reflects the space's purpose as a resource for those facing discrimination, promoting both visibility and protection. The design's adaptability is key, incorporating dry construction materials that are easy to modify or dismantle, allowing the space to evolve in response to changing needs and policies. Sustainable, eco-friendly materials were chosen not only for their environmental impact but also for their potential for reuse or recycling, ensuring the space's continued relevance over time.

Source: <https://sietearquitecturamasingeneria.com/>



@Milena Villalba



@Milena Villalba

A flexible space for support and awareness

To foster inclusivity and accessibility, a space must balance privacy with visibility, adaptability with sustainability, ensuring that it evolves to meet the needs of all who seek support

- Use design elements, like transparent facades and partitioned interiors, to ensure both openness and confidentiality.
- Use easily modifiable construction materials that can adapt to changing needs and functions over time.
- Ensure the space feels welcoming and open to everyone, especially underrepresented populations.
- Select eco-friendly, recyclable materials that support long-term sustainability and can be reused or repurposed.
- Consider the space's ability to evolve, accommodating shifts in policies, strategies, and user needs.
- Prioritize the comfort and needs of individuals requiring support, ensuring the space remains functional and sensitive to their experiences.
- Design spaces that encourage public engagement and awareness, using clear, accessible signage and informative elements visible to the community.



UR
20



@Rafael Salim

Rita Lee Park - Legacy of the Olympic Park

2024, Barra da Tijuca
- Ecomimesis Soluções
Ecológicas

This special park is designed with inclusive, multi-use spaces that offer something for everyone, including children's play areas, sports facilities, skateparks, and areas for social interaction. The park's sports offerings, such as basketball courts, futmesa, and a climbing wall, promote physical inclusion by providing opportunities for various groups to engage in activities. The integration of ecological solutions further enhances the inclusivity of the park by restoring local ecosystems and fostering a connection with nature, which is crucial for the well-being of urban residents. This design not only offers diverse recreational experiences but also provides spaces for relaxation, reflection, and community engagement.

Source: <https://ecomimesis.com.br/2024/01/09/parque-rita-lee/>



@Rafael Salim



@Rafael Salim

Expand green and sportive spaces for all

Inclusive recreational areas are essential to foster diversity, providing accessible environments where all individuals can engage in physical activities, connect with nature, and feel a sense of belonging

- Design multi-functional spaces to cater to different sports, age groups, and activities.
- Promote accessibility with inclusive design principles to accommodate all individuals, including those with disabilities.
- Integrate ecological solutions by using native plants and green spaces to enhance biodiversity and connect people to nature.
- Encourage community interaction with areas for social gatherings, picnics, and family activities.
- Ensure safe and inviting spaces with clear wayfinding, seating, and shaded areas for comfort.
- Emphasize sustainable design using eco-friendly materials and practices for long-term sustainability.
- Offer diverse recreational options to meet the varied needs of the community.
- Foster ecological education to raise awareness about local ecosystems and sustainability.



@Dhrupad Shukla

School for Blind and Visually Impaired Children 2021, Gandhinagar - SEA/ab

This space provides a contained outdoor space for children to play and interact safely ensuring their full development. The project allows students to create a map of the spaces. It is a simple space but with geometric distinctions that allow you to locate yourself: a rounded corner, a different texture on the wall, different shapes of the classroom as well as different qualities of light. The school is a space that can be navigated with the help of more than sight sense. Some classrooms open onto the interior courtyard with the possibility of outdoor learning. The environmental and natural quality is very good, with ventilation and native vegetation.

Source: <https://www.sea-lab.org/School-for-blind-and-visually-impaired-children>



@Dhrupad Shukla



@Bhagat Odedara

Perform a collaborative design process with people with different disabilities to create accessible, environmental and natural quality spaces

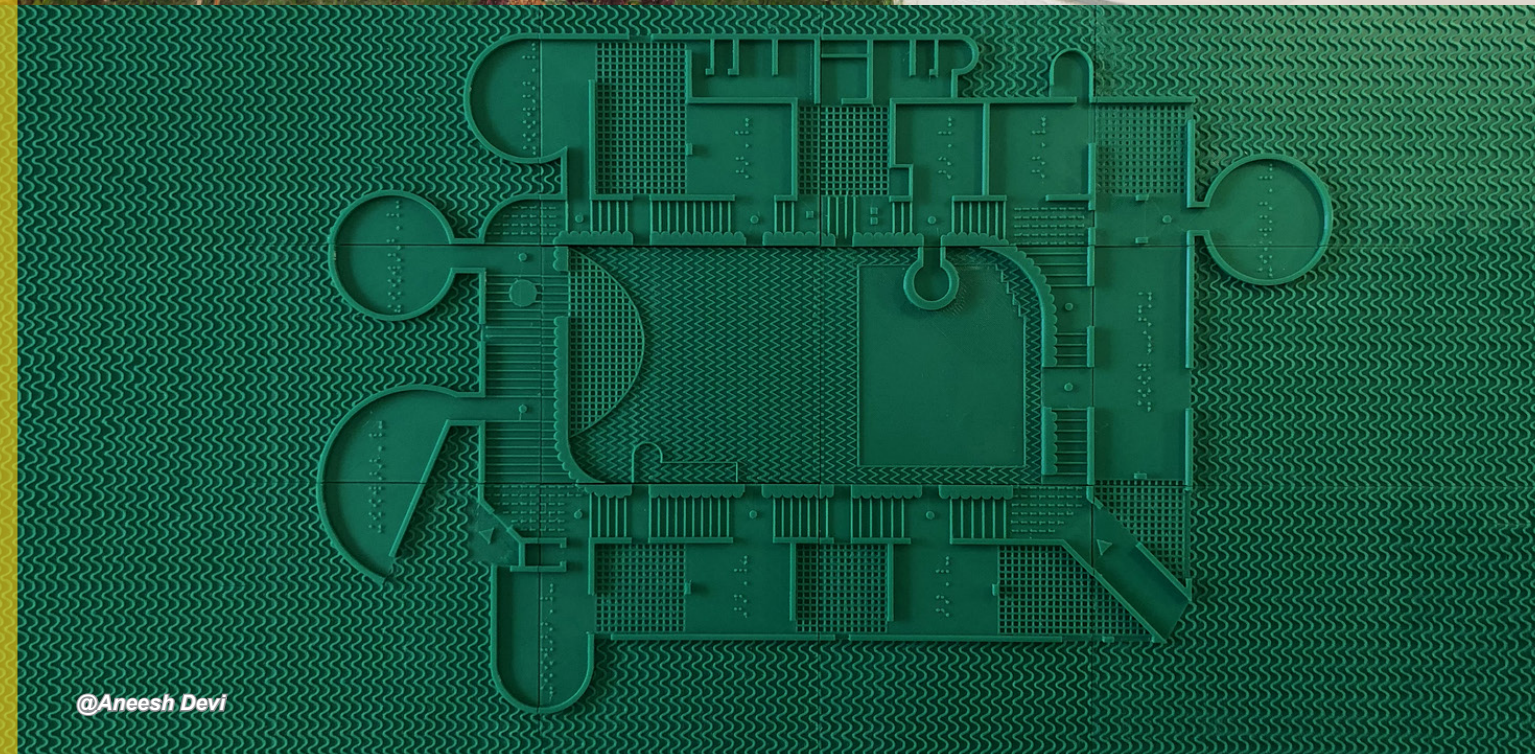
To create an inclusive and accessible space, it's important to consider the needs of all users. One consideration is using strategies to help people navigate the space. For example: designing a space that can be experienced through multiple senses, and using clear signage to indicate entrances and exits.

- Incorporate multiple senses, such as sound, smell, and touch, to aid navigation. For example: people with reduced or no vision, put textures on the walls to help them find their way around.
- Use simple geometry with distinct spaces to enhance orientation. For example: rooms of different shapes, which in turn give different spatial acoustics.
- Employ clear signage, visual and tactile cues to guide users. For example, for people with low vision, light can help to perceive the exits much more than a panel.
- Involve users in the design process through co-design and feedback sessions. For example: generate tactile and braille plans to communicate with users who cannot see. Perform these sessions throughout the phases of the project, varying their formats.
- Utilize natural light, ventilation, and vegetation to create a comfortable and healthy environment.
- Design spaces that can be adapted to various uses, including outdoor learning.

Universal Design Hearing impairment Visual impairment Cognitive abilities Physical abilities and features Temporary Gender perspective
Carers Older people Children Low-education Low-income Decolonial perspective Digital barrier Environment Other(+)



@Akash Dave



@Aneesh Devi



@Akash Dave



@JB Menges, courtesy of
Bordeaux Metropole

Simone Veil Bridge 2024, Bordeaux - OMA

This bridge, which crosses the Garonne River as it passes through Bordeaux, is 44 metres wide. Its width enables it to create urban space activity. Here the traffic is separated, with the pedestrian area being the widest. The bridge is as wide as it is wide enough to create urban space, leisure space and meeting places, such as a linear park or a square.

Source: <https://www.oma.com/projects/simone-veil-bridge>



@Clement Guillaume,
courtesy OMA



@Clement Guillaume,
courtesy OMA

Design connecting infrastructures that create public space beyond their intended use

Bridges can be more than just functional infrastructure to connect riversides. They can enhance the beauty of a landscape as well as improve accessibility and inclusivity in public space. By prioritising the pedestrian experience, these infrastructures can become landmarks that enrich the activity of our cities.

- Bridge widths similar to those of a large avenue
- Separate the different traffic flows: vehicles, bicycles and pedestrians.
- Dimension the pedestrian lane of the largest size among the others.
- Integrate it into the landscape
- Enable park or plaza-like activities to take place



UR
23



@ James Steinkamp

West Lafayette Wellness Center

2020, West Lafayette - Perkins&Will

West Lafayette Wellness Center is a successful model of accessible architecture. The pool area has a ramp for easy entry and exit, a gentle slope for comfortable access, wide walkways and handrails for support. Such details make the pool suitable for all types of people. In addition, the centre promotes accessibility with lifts, wide doors, accessible toilets and clear signage.

Source: <https://www.archdaily.com/976161/west-lafayette-wellness-center-perkins-and-will>



@ James Steinkamp



@ James Steinkamp

Design inclusive sports and wellness centres

In order to realise inclusive sports facilities, it is important to emphasise mobility diversity. Therefore, swimming pools and other sport facilities should have a universal design, which incorporates the diversity of abilities.

- Prioritise access ramps: ensure that swimming pools and other bodies of water have ramps to facilitate entry and exit.
- Consider a zero-depth entrance for people with mobility impairments.
- Install handrails to provide support for those who need it.
- Use clear, easy-to-read signage



UR
24



@ Shibuya

Yoyogi Fukamachi Mini Park Toilet

2020, Shibuya - Shigeru
Ban Architect

This project aims to solve the main needs of public restroom users: cleanliness and occupancy. When a restroom is vacant, the glass appears transparent, allowing you to decide whether or not to enter. However, when occupied, the transparent glass turns opaque to provide privacy. Its design goes beyond these practical measures, offering an aesthetically pleasing, accessible, and inclusive space for all users. It features accessible facilities, cabins for women and men, facilities for ostomy users, and a baby chair. The project emphasizes reinforcing the design with a maintenance plan: although the maintenance plan is initially led and developed by the team itself, the goal is to gradually transfer the management and responsibilities to Shibuya City.

Source: https://tokyotoilet.jp/en/yoyogifukamachi_mini_park/



@Shibuya



@Shibuya

Design clean, private, accessible, and inclusive toilets

To make toilets more accessible and inclusive for everyone, toilets should be clean and accessible. This way, they are more likely to be used and enjoyed by people of all ages and abilities.

- **Prioritize cleanliness and occupancy.** Make sure the toilet is clean and easy to see if it is occupied.
- **Consider privacy.** Provide privacy for users by using opaque glass or partitions.
- **Make the toilet accessible.** Design the toilet to be accessible to people of all abilities.
- **Provide a variety of facilities.** Offer different types of facilities, such as cabins for women and men, facilities for ostomy users, and baby changing stations.
- **Develop a maintenance plan.** Create a plan to keep the toilet clean and in good working order.

Universal Design Hearing impairment Visual impairment Cognitive abilities Physical abilities and features Temporary Gender perspective
Carers Older people Children Low-education Low-income Decolonial perspective Digital barrier Environment Other(+)